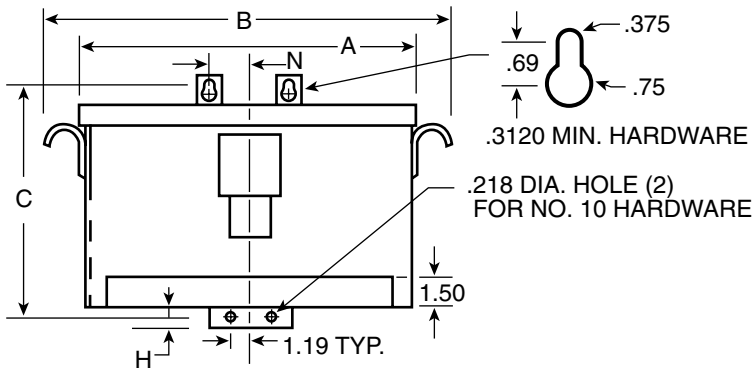
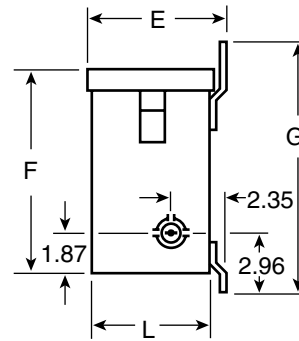


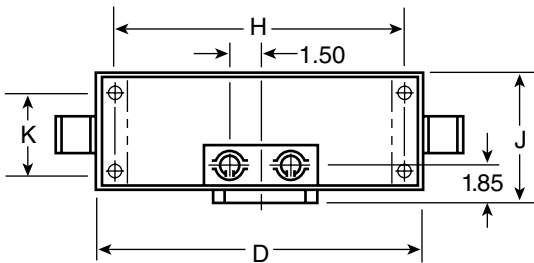
FRONT



SIDE



BOTTOM



CERTIFIED DIMENSIONS  
 THREE PHASE 7.5 KVA  
 TOTALLY ENCLOSED  
 DRIVE ISOLATION TRANSFORMERS

KVA	A	B	C	D	E	F	G	H	J	L	N	WT. LBS.
7.5 KVA	16.87	19.25	14.46	16.72	7.37	13.06	15.21	.38	7.31	6.87	3.25	180



**Acme Electric Corporation**

Power Distribution Products Division  
 AN ACTUANT COMPANY

4815 West Fifth Street  
 Lumberton, NC 28358  
 910-738-1121 Inside NC  
 800-334-5214 Outside NC  
 910-739-0024 Fax  
[www.acmepowerdist.com](http://www.acmepowerdist.com)